



OPERATOR'S MANUAL AND PARTS LIST PETROL TILLER - THTILL6.5-A

Spares & Support: 01793 333212

www.thehandy.co.uk

Before use please read & understand this manual, paying particular attention to the safety instructions.

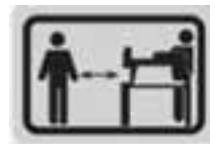
20/05/2013

CONTENTS

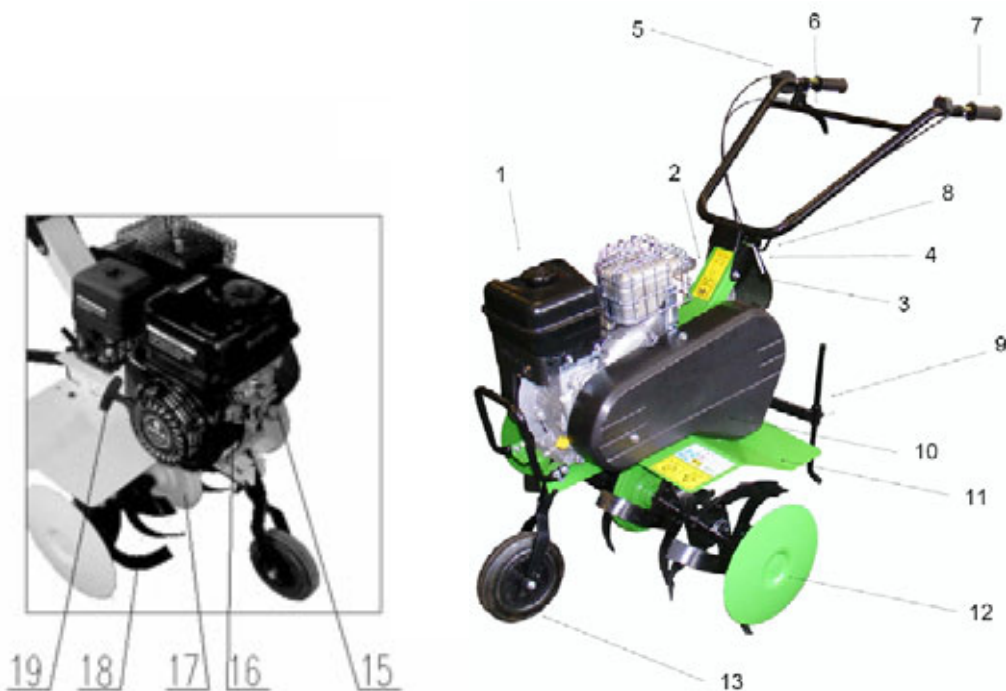
SAFETY INSTRUCTIONS	3
MAJOR PARTS	4
SPECIFICATIONS	4
ASSEMBLY	5-6
OPERATING THE TILLER	7
MAINTENANCE	7
PARTS DIAGRAM AND LIST	8-9
EC DECLARATION OF CONFORMITY	10

SAFETY INSTRUCTIONS

- **Read and understand the owner's manual and labels affixed to the petrol tiller. Learn its application and limitations as well as the specific potential hazards. Retain these instructions for future reference.**
- Check your tiller before use. Keep guards in place and in working order. You should only work with a machine that is in good condition. If you notice any defect on the machine that may endanger the operator, do **NOT** operate until faults have been rectified. Replace worn or damaged parts using only original spare parts.
- Do **NOT** operate the tiller whilst under the influence of drugs, alcohol or any medication that could affect your ability to use the apparatus correctly.
- Dress appropriately – do **NOT** wear loose clothing, ties, jewellery or anything that could be caught in the moving tines. Use of gloves and strong footwear is recommended.
- Only work in daylight or sufficiently good artificial light.
- Keep children and pets at least 10 metres away from the tiller at all times and do NOT operate near underground electric cables, telephone lines, pipes or hoses.
- Wear eye protection and a face or dust mask if working in dusty conditions.
- Do NOT operate on a slope of more than 10 degrees. When on slopes, slow down and make sure you have a good footing.
- Never operate the machine with one hand and be aware that, if the tines hit stones, frozen ground or buried roots and stumps, then it may unexpectedly bounce upward and jump forward.
- If the tines hit a large stone, stump or other obstacle check immediately for any damage to the tines. If the machine starts to vibrate abnormally switch off the motor immediately and check for the cause.
- Always switch off the machine, wait for the tines to stop turning and disconnect the spark plug before carrying out any inspection or maintenance. **The tines will not stop immediately after switching off.**



MAJOR PARTS



1	Engine	2	Chassis	3	Bolt
4	Handle Height Adjuster	5	Break Knob		
6	Forward Handle	7	Handlebar	8	Bolt Bar
9	Drag Bar	10	Belt Cover	11	Mudguard
12	Tine Wheel	13	Front Wheel	15	Oil Filler Cap
16	Switch	17	Chain Box	18	Tine
19	Recoil Starter				

SPECIFICATION

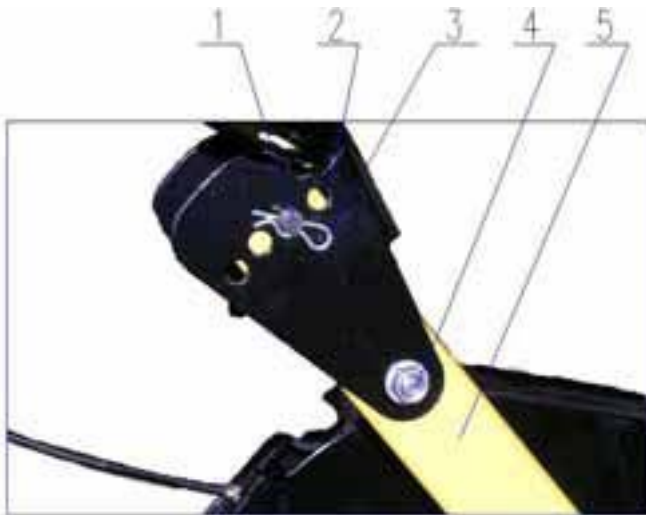
Model No	THILL6.5-A
Working Width	60, 70 or 75cm
Tine Revolution	156 revs /min
Tine Diameter	31cm
Clutch	Tension Belt Set
Speed ratio	22.6:1
Engine	Briggs & Stratton 900 series
Max Revolution	3600 revs/min
Fuel Tank Capacity	2.7 litres
Oil Tank Capacity	0.6 litres
Starting Mode	Manual
Net Weight	52kg

ASSEMBLY

To assemble the handlebar:

The handle height can be adjusted to suit the height of the operator by varying the angle where the handle adjuster fits on to the chassis.

- Remove the bolt and adjuster and attach the handle height adjuster onto the chassis.
- Insert the bolt into one of the adjustment holes and secure it with the nut.
- Replace the adjuster and tighten with the clip.



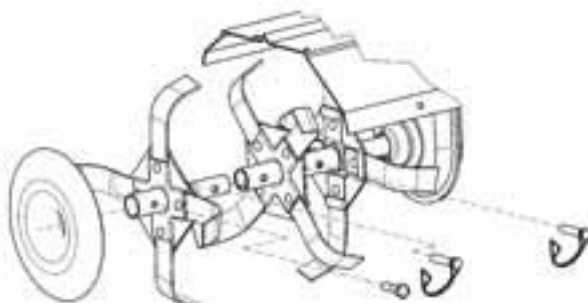
1	Adjuster
2	Adjustment Hole
3	Clip
4	Bolt
5	Chassis

To assemble the tines:

The tiller is supplied with a double set of tines, plus an additional single set for extra wide cultivation.

The tines are “handed”, ie. they have a bevelled leading edge which must always face forwards.

- Attach the mudguards to the main chassis with the bolts supplied.
- Attach the tines using the pins supplied as shown in the diagram.
- Pay particular attention to the direction of the pins - they must rotate in the same direction as the tines to avoid them working loose during operation.
- Attach and fix the crop protection discs.

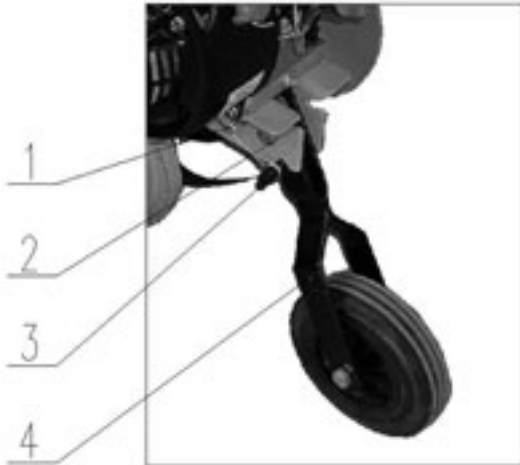


ASSEMBLY, cont'd

To assemble the front wheel:

The front wheel is used to help transport the tiller.

Fix the front wheel in the down position using a lockpin. When cultivating move the wheel to the up position.

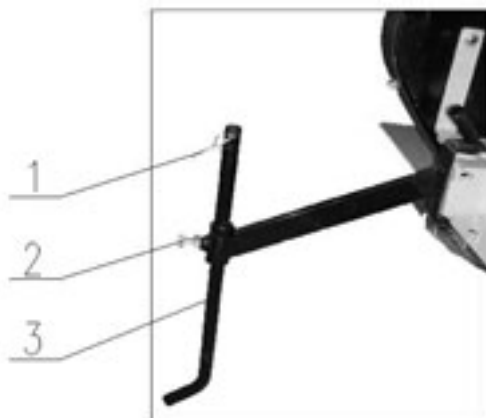


1	Spring
2	Groove
3	Lockpin
4	Front Wheel Bracket

To assemble the dragbar:

The dragbar can be adjusted to differing tilling depths. If the soil is hard, try starting with a shallower gauge and gradually lower the dragbar to the depth required.

Attach and adjust the dragbar by means of the locknut and retainer as shown.



1	R Clip
2	Retainer Bolt
3	Dragbar

OPERATING THE TILLER

The tiller is supplied without fuel or oil.

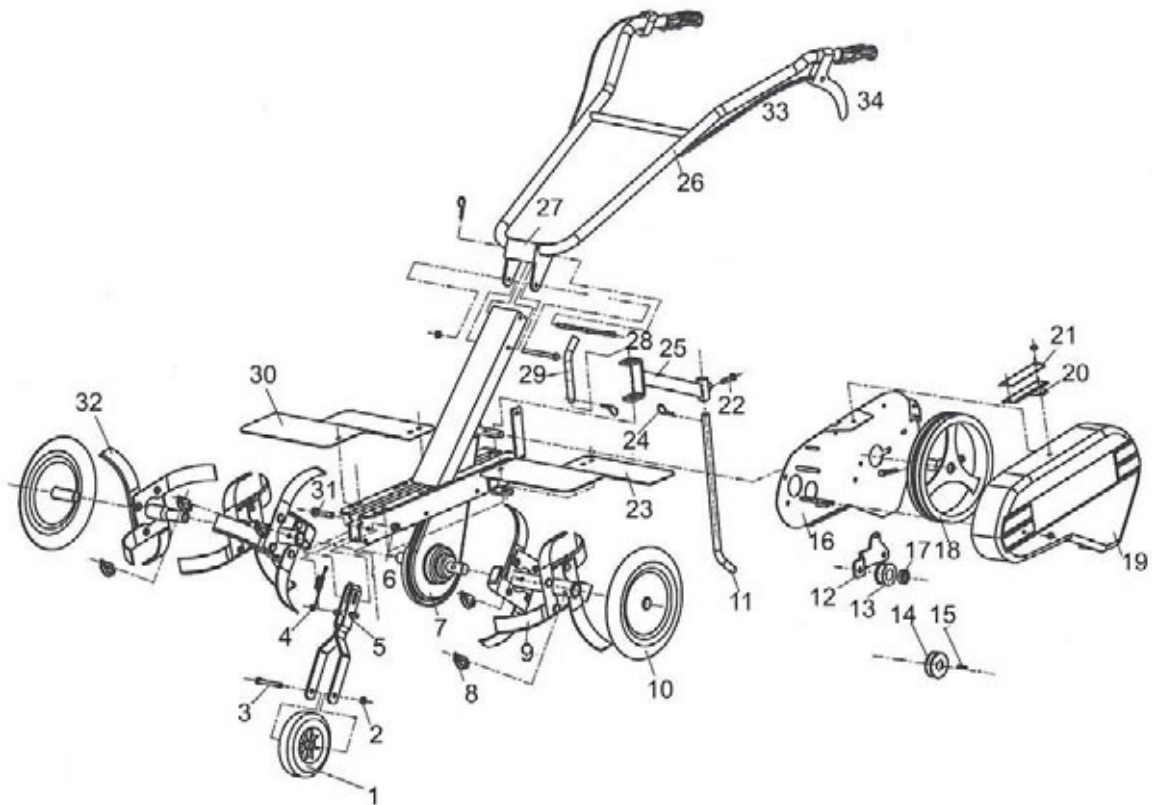
- Fill the engine to the correct level with good quality SAE 30 engine oil.
- Fill the fuel tank with unleaded petrol, being careful not to overfill and wiping up any spilt fuel with a cloth.
- Push the choke control lever into the “closed” position and make sure the ignition switch is in the “on” position (situated on the handles).
- Pull the starter cord until the machine fires, gradually move the choke lever to the "open" position.
- Allow the machine to idle for a short period before commencing work.
- Manoeuvre the machine to the working area and set the dragbar to the required setting.
- Lift the front wheel up and retain with the clip.
- Move the throttle control to full speed and gently squeeze the clutch lever to engage the tines.

MAINTENANCE

- Allow the tiller to cool down to avoid any risk of burns from the hot engine and disconnect the spark plug before carrying out any maintenance.
- Wear strong gloves to protect your hands from sharp edges.
- Clean any soil and debris from the tines and occasionally wipe with a little anti-corrosive oil.
- Drain the tiller completely of fuel if it is to be stored for more than one month.

Other than the above, all further maintenance should be carried out by an authorised service dealer.

PARTS DIAGRAM



PARTS LIST

No.	Part No.	Description	QTY	No.	Part No.	Description	QTY
1	TH104-1	Front Wheel	1	18	TH167-18	Big Belt Pulley	1
2	TH104-2	Nut M8	2	19	TH104-19	Belt Pulley Cover	1
3	TH104-3	Bolt	1	20	TH167-20	Thermal Cover	1
4	TH104-4	Spring	1	21	TH104-21	Insulation Board	1
5	TH104-5	Front Wheel Bracket	1	22	TH104-22	Bolt M10	1
6	TH104-6	Nut	1	23	TH104-23	Mud Guard (Left)	2
7	TH104-7	Gear Case	1	24	TH104-24	R Clip	3
8	TH104-8	Pin	5	25	TH104-25	Bracket	1
9	TH104-9	Tine Assembly	2	26	TH104-26	Handle Bars	1
10	TH104-10	Crop disc	2	27	TH104-27	Handle Connector	1
11	TH104-11	Drag Bar	1	28	TH104-28	Bolt	1
12	TH167-12	Tension Wheel Support	1	29	TH104-29	Rear Bolt Bar	1
13	TH167-13	Tension Wheel	1	30	TH104-30	Mud Guard (Right)	2
14	TH167-14	Small Belt Pulley	1	31	TH104-31	Bolt	1
15	TH167-15	Key	1	32	TH104-32	Additional Tine Assembly	1
16	TH167-16	Engine Support	1	33	TH104-47	Forward Cable	1
17	TH167-17	Bearing	1	34	TH104-44	Forward Handle	1
				35	TH104-20	Forward Belt	1



EC Declaration of Conformity

We, Importer
Handy Distribution Ltd.
SN3 4NS

Declare that the product
Designation: 206CC PETROL TILLER
Model: THTILL6.5-A

Complies with the following directives:

2006/42/EC- Machinery Directive
2004/108/EC- Electromagnetic Compatibility Directive
2000/14/EC amended by 2005/88/EC- Noise Emission in the Environment by Equipment for
Use Outdoors Directive.

The conformity assessment procedure followed was in according with Annex V of the
Directive 2000/14/EC.

-Measured Sound Pressure Level: 96.9 dB (A)
-Guaranteed Sound Power Level: 98 dB (A)

Standards and technical specifications referred to:
- EN709: 1997 + A2:2009
- EN 55012:2002+A1
- EN 61000-6-1:2001

Authorised signatory and technical file holder

Date: 15/10/2010

Signature: 

Name / title: Mr. Simon Belcher / Managing Director
Hobley Drive, Stratton St Margaret, Swindon, Wiltshire, SN3 4NS

GUARANTEE

This product is guaranteed against manufacturing defects for a period of 12 months. This does not cover the product where the fault is due to misuse, abuse, use in contravention of the instructions, or where the product has been the subject of unauthorised modifications or alterations. This warranty only covers domestic use and will be void if the tool is used for a commercial application. In the event of a problem with the product within the guarantee period, please contact Customer Service on 01793 333212 or email customerservice@handydistribution.co.uk. If the issue cannot be resolved over the telephone or by email, you may be referred to your local approved service dealer.

Please keep your sales receipt as proof of purchase

Your statutory rights remain unaffected. Guarantor: Handy Distribution SN3 4NS



To order spare parts and see the complete range of garden machinery and garden equipment from Handy, visit:

www.thehandy.co.uk

Spares & Support: 01793 333212

